



ECO2

powerful and affordable B&W system



CHISON
Value Beyond Imaging

Advanced Imaging Technologies



Ergonomics

- Rotatable LED (0~30°) : tailor to different viewing angles
- Ultra-compact & Ultra-light
- Easy to carry
- Keyboard : For easy and quick access
- Dedicated cart TR 9000
- Streamlined workflow

ECHO

- Advanced technologies:
 - i-Image(Intelligent image optimization)
 - THI(Tissue Harmonic Image)
 - SRA(Speckle Reduction Algorithm)
 - Compound imaging
- Full digital beam-former
- Trapezoid
- Automatic PW trace
- Chroma
- Full screen display mode
- AIO(Automatic image optimization)

Economic

- The latest platform & more advanced chip-set:brings you better image quality and features at less cost in a more compact box
- Support PC printer, reduce investment & day to day paper cost
- 8G memory card
- 320G harddisk (option)
- Vehicular Charging

ECO-friendly

- Less radiation
- Less power consumption
- Longer usage life:LED
- Longer battery standby time:>2 hours

Support PC Printer



ECO2



Traditional Ultrasound

Connect PC Printer



PC Printer

A4 Paper



Connect Video Printer



Video Printer

Thermal Paper



Can ONLY Use Video Printer

Benefits

- PC printer is less expensive than video printer
- A4 paper saves more cost than thermal paper for everyday use
- Detail report can be printed (with images, measurement results, patient information)

- More expensive
- Can ONLY print images

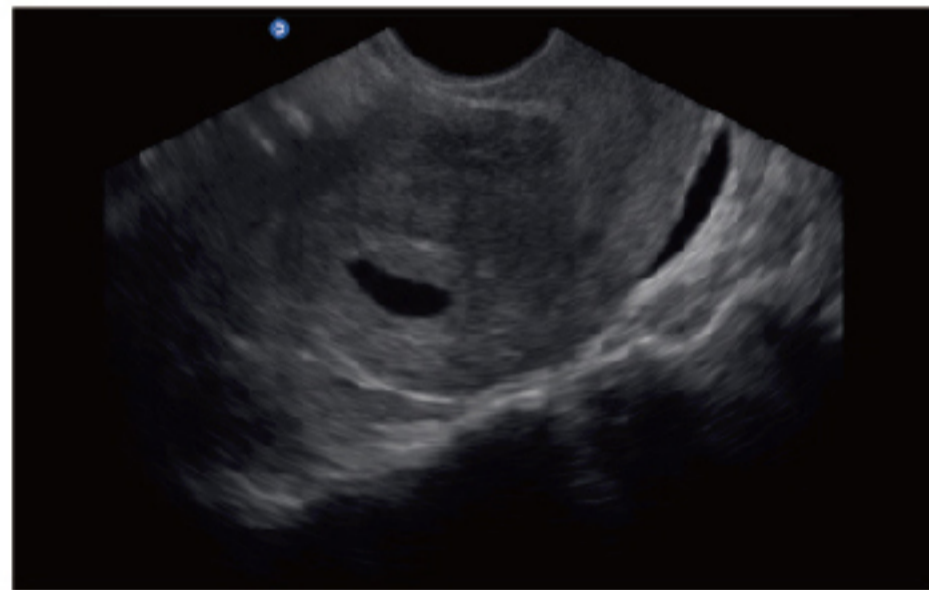
Excellent PW resolution and automatic

PW trace measurement will greatly improve the diagnosis confidence by delivering both qualitative & quantitative results.

Great image quality



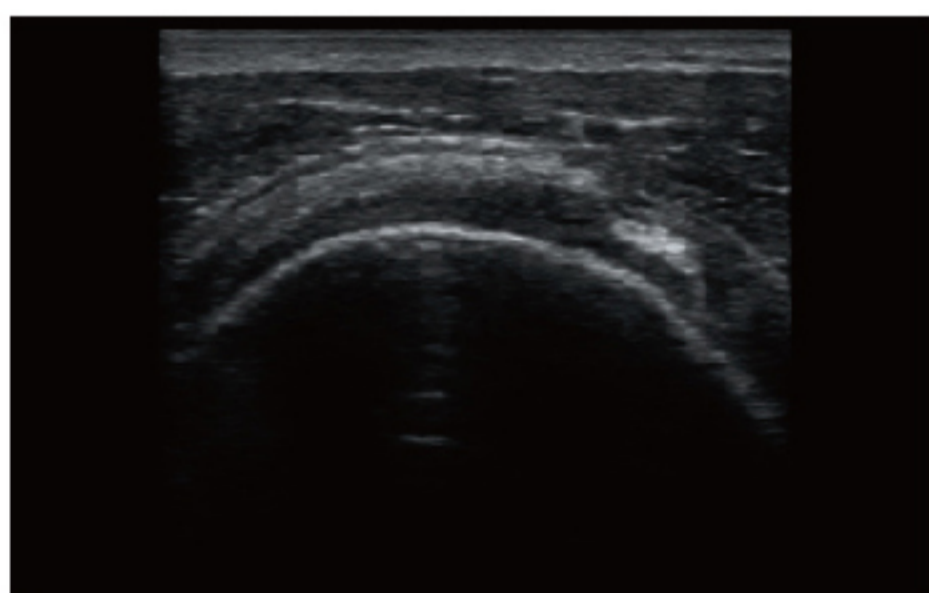
Median Sagittal Section,B Mode



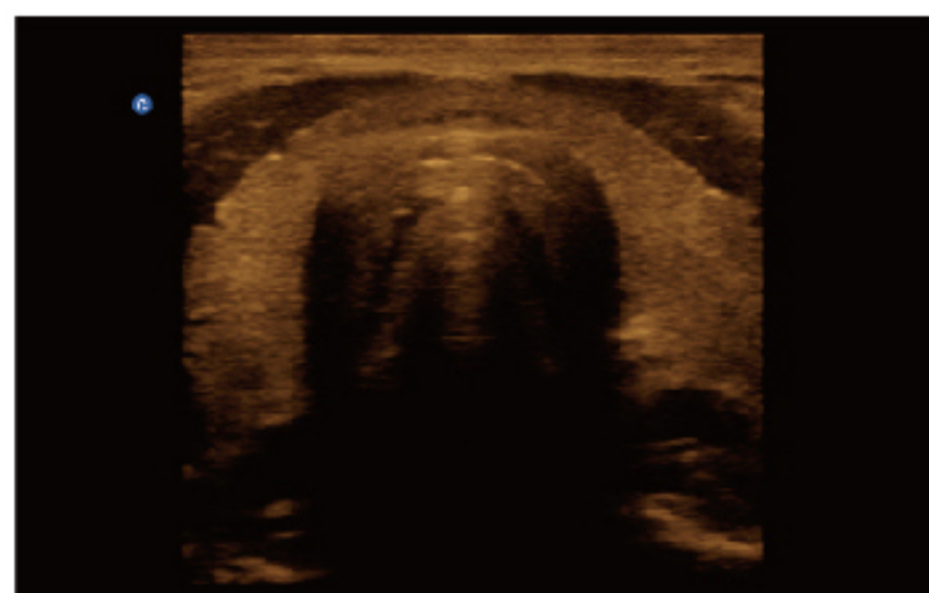
Early Pregnancy,B Mode



Kidney,B Mode



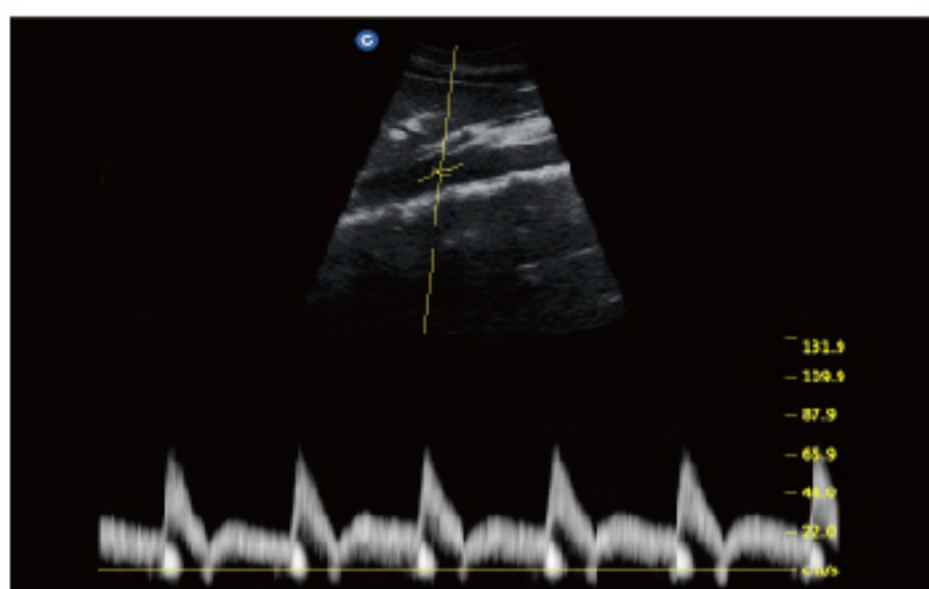
Subscapularis Tendon,B Mode



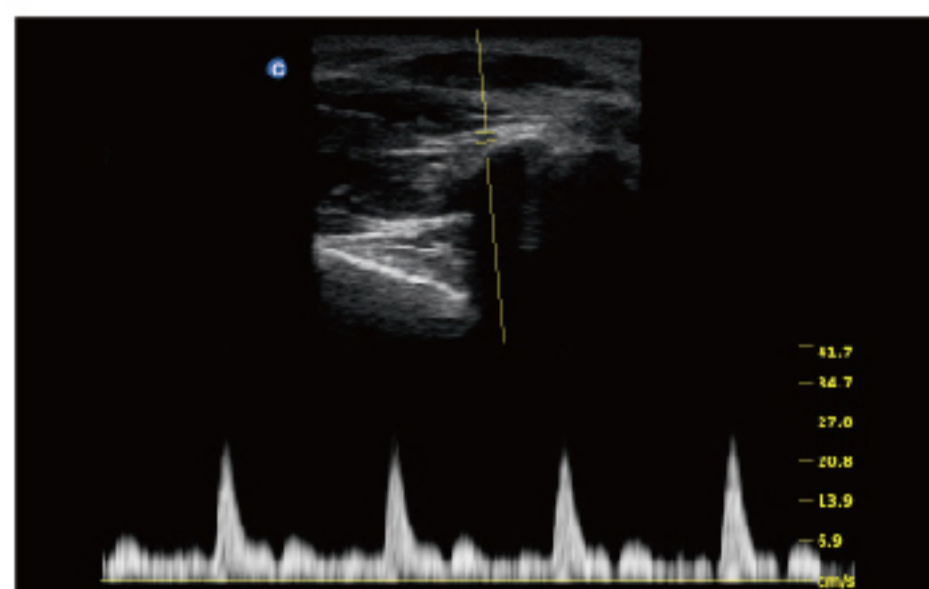
Thyroid,B Mode



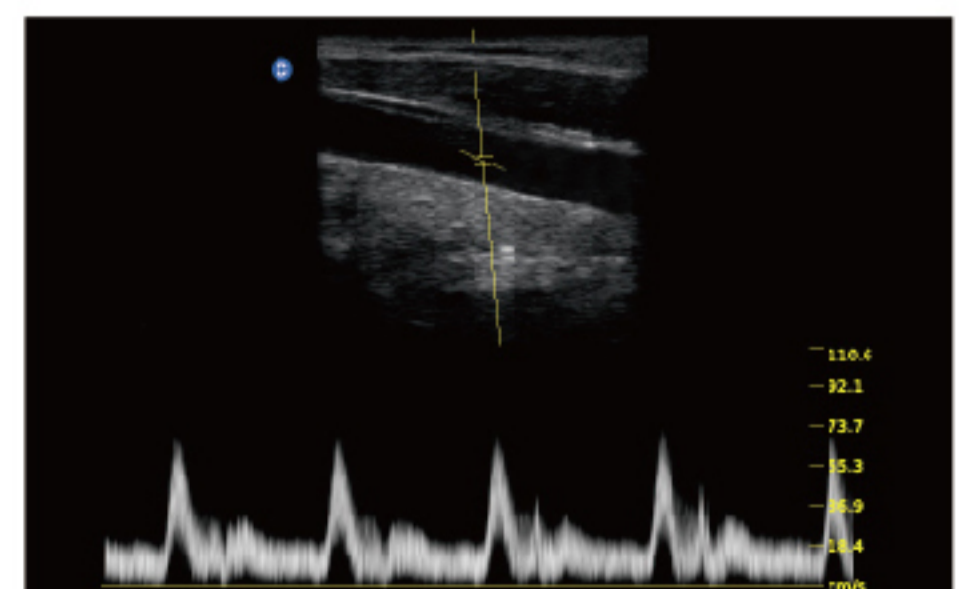
Gallbladder,B Mode



Aorta Artery,PW Mode



Thumb Artery,PW Mode



Carotid,PW Mode

Specifications

Applications	Abdomen,OB/GYN,Vascular, Small parts(breast, testes, thyroid),Musculoskeletal Conventional & Superficial, Pediatric, Basic Cardiac
Imaging technologies	i-Image,SRA,Compound imaging,THI
Display Modes	B, B/B, 4B, M, B/M,PW
Gray Scale	256 Levels
Scanning Depth	240mm Max (depend on the probe types)
Probe Frequency	2.5 MHz - 11.0 MHz (Depend on the probe)
Cine Loop	256 frames
Zoom	4 steps
Software Packages	Dedicated measurement package:General , OB/GYN,URO , Cardiac,vascular,small parts
Archives Management	Patient information management, images record, exam report.
Power Supply	AC 100V-240V, 50Hz- 60Hz
Standard Configuration	Main unit , 2 probe connectors, 3 USB ports,VGA port ,Video port ,LAN port, Full Screen Display Mode,i-Image,Chroma ,SRA,Compound imaging,THI, 8G memory card,PW Mode,Built-in Battery (BT-2500)
Option	DICOM 3.0, Water-proof keyboard cover, Carrying Case (BG-100),Cart TR 9000 Support PC Printer*(HP 1010 / HP 1020 Plus / HP Pro P1102W / HP Pro 200 M251n) , Video Printer(SONY UP-X898MD)



2.5MHz - 5.0MHz Convex
C3-A



5.3-10.0MHz Linear
L7M-A



5.3-11.0MHz Linear
L7S-A



2.5 MHz-5.0MHz Micro-Convex
MC3-A



4.0 MHz-7.0MHz Micro-Convex
MCSV-A



4.5 MHz -8.0MHz Transvaginal
V6-A



4.5MHz - 8.0MHz Micro-Convex
MC6-A

CHISON MEDICAL IMAGING CO., LTD.

Sales & Service Contact Address:

No. 9 Xin Hui Huan Road, New District, Wuxi, Jiang Su Province, China214028

TEL: 0086-510-85310593 / 85310937 FAX: 0086-510-85310726 EMAIL: export@chison.com.cn



We reserve the right to make changes to this catalogue without prior notice.
Please contact us or your local dealer for the latest information.
*Please refer to the user manual for details.

E-ECO2 160115