

CHISON

Value Beyond Imaging



Full Screen Display Mode

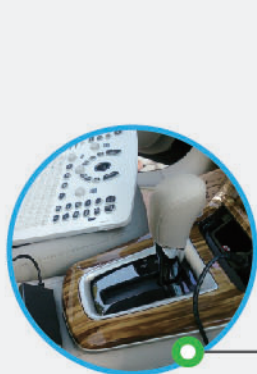
ECO1

Premium Design, Surprising Price

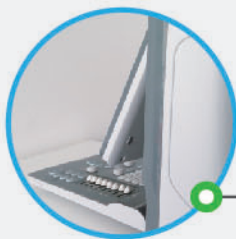


WWW.CHISON.COM

User-friendly and Modern Design



Vehicle Power Charger



12 inch rotatable LED monitor (0~30°) with different viewing angles



One key to quickly save



Anti-water keyboard Cover



DICOM 3.0 (option), USB

ECO1

Premium Design, Surprising Price



Ultra-compact

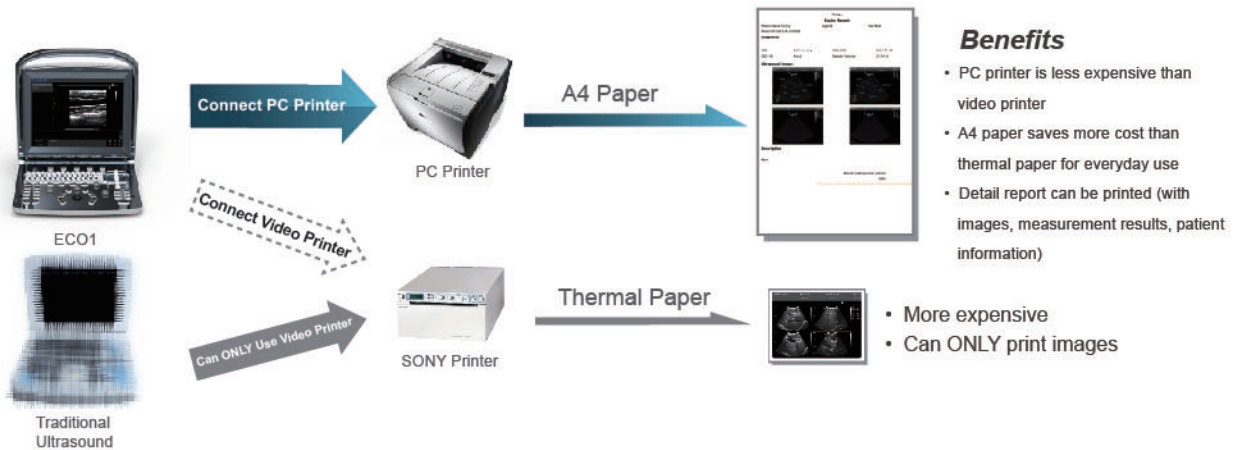


Clips for quickly recall (CINE, Still images)



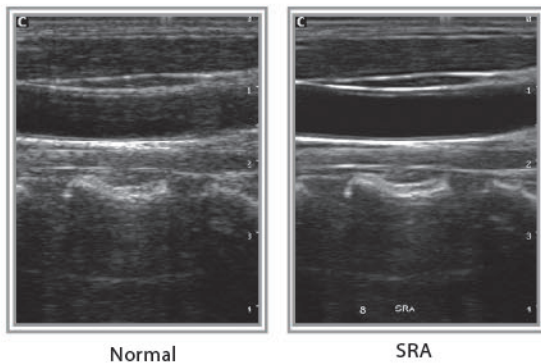
Carrying case (BG-100): go anywhere you want

Support PC Printer



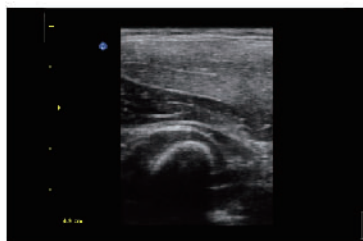
Advanced Technologies

Speckle Reduction Algorithm(SRA)



SRA is the technique that uses a variety of denoising algorithm to suppress speckle, smooth the tissue images, and make the faint edge more appearing.

Great image quality



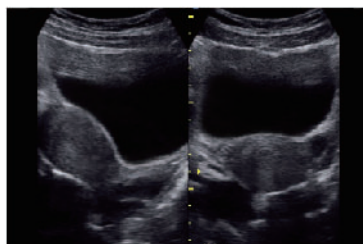
Elbow Joint



Fetal Hand



Fetal Head



Uterus, 2B Mode



Follicle, B Mode



Kidney, B Mode

Specifications

Applications	Abdominal , OB/GYN , Urology, Pediatric;Small Organ(breast, testes, thyroid); Cardiac , Peripheral Vascular, Musculo-skeletal Conventional & Superficial
Display Modes	B, B/B, 4B, M, B/M
Zoom	4 steps
Advanced Technologies	THI,i-Image,SRA,Compound
Option	Probe connector , DICOM 3.0, Water-proof keyboard cover, Carrying Case (BG-100) , Support PC Printer*(HP P2055D,HP 1102,HP M251n) ,TR-9000 , Built-in battery



2.5MHz - 5.0MHz Convex
C3-A



5.3-10.0MHz Linear
L7M-A



5.3-11.0MHz Linear
L7S-A



2.5 MHz-5.0MHz Micro-Convex
MC3-A



4.0 MHz -8.0MHz Transvaginal
V6-A



4.5MHz - 8.0MHz Micro-Convex
MC6-A

CHISON MEDICAL IMAGING CO., LTD.

Sales & Service Contact Address:

No. 9 Xin Hui Huan Road, New District, Wuxi, Jiang Su Province, China214028

TEL: 0086-510-85310593 / 85310937 FAX: 0086-510-85310726 EMAIL: export@chison.com.cn



We reserve the right to make changes to this catalogue without prior notice.
Please contact us or your local dealer for the latest information.

*Please refer to the user manual for details.

E-ECO1-150828